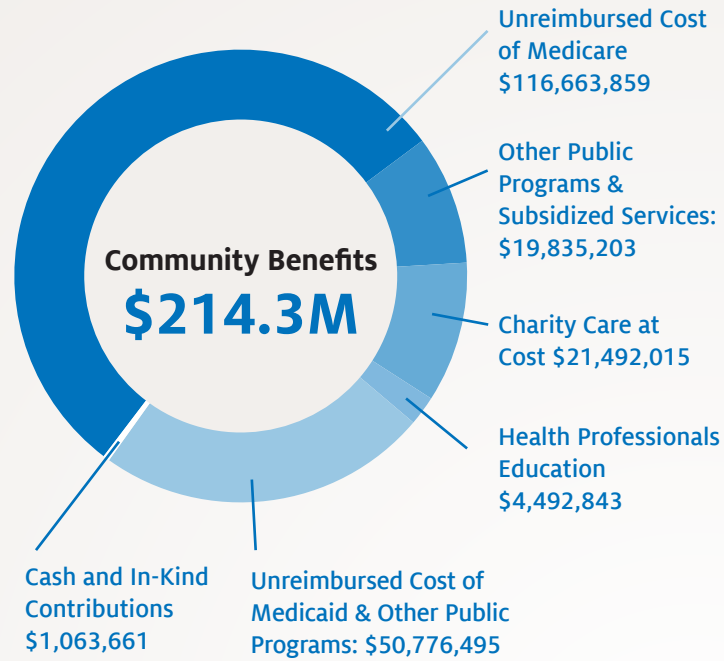


Our Commitment, Our Impact



Unreimbursed and Charity Care by Entity

Lincoln Area (Bryan Medical Center, Bryan Physician Network and Bryan Heart):	\$148.9 million
Kearney Regional Medical Center:	\$19.3 million
Grand Island Regional Medical Center:	\$13.9 million
Crete Area Medical Center:	\$4.3 million
Merrick Medical Center:	\$2.4 million

Bryan Health and its 7,428 employees across Nebraska generated \$2.7 billion of economic impact for our state in 2024.

Statewide totals*		By Medical Center
Direct Impact: <i>Our services provided by those we employ</i>	\$1.4B	BMC \$953.9M CAMC \$35.9M GIRMC \$85.5M KRMC \$174.2M MMC \$29.9M
Indirect Impact: <i>Downstream businesses, such as contractors and linen services, as well as visitor spending in our communities</i>	\$576.9M	BMC \$392.5M CAMC \$14.7M GIRMC \$35.2M KRMC \$71.7M MMC \$12.3M
Induced Impact: <i>What our employees, and downstream business employees, spend to live in our communities (real estate, electricity, entertainment, etc.)</i>	\$685.2M	BMC \$396.3M CAMC \$17.4M GIRMC \$37.6M KRMC \$72.7M MMC \$14.4M
Total Impact:	\$2.7B	BMC \$1.7B CAMC \$68M GIRMC \$158.2M KRMC \$318.7M MMC \$56.6M

Revenue Created plus State/Local Taxes Generated Source: IMPLAN estimations using Bryan Health Data
*Totals include our medical centers, Bryan Physician Network, Bryan Heart and other categories.

External Support for Students and Patient Care

Our supporters

Total number of donors: 3,217
 Total number of gifts: 9,722
 Average per donor: \$2,000

Total external support

Gifts and pledges from individuals, corporations and foundations: **\$6,433,362**
 In-kind gifts: **\$229,538**
 Volunteer support*: **\$1,330,111**
 Grant funds received from 11 total grants: **\$3,492,215**
 Total external support: **\$11,485,226**

*711 volunteers served throughout Bryan Health and contributed 41,618 hours of service in FY 2024, valued at \$1,330,111. The Institute of Philanthropy quantifies the value of each hour of service at \$31.96.

Bryan employee giving

Number of employee donors: **1,995**
 Dollars committed: **\$604,789**

Where donor gifts and grants were designated

Bryan Medical Center: **\$5,669,197**
 Crete Area Medical Center: **\$185,977**
 Kearney Regional Medical Center: **\$414,159**
 Bryan College of Health Sciences: **\$3,379,673**
 Grand Island Regional Medical Center: **\$110,106**
 Merrick Medical Center: **\$76,460**
 Other entities: **\$319,543**



Scan this code for a full list of our generous donors.



This summer, Alexandria Mansfield and Elizabeth McLaughlin donated the proceeds from their lemonade stand to the Bryan Medical Center pediatrics department. The young donors are pictured here with pediatric nurses Jamie Hatch, Madison Egger and Ashley Flink.